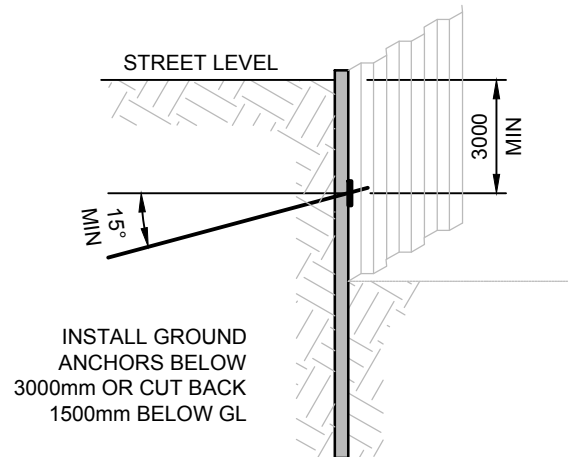


### GROUND ANCHORS

It is required that ground anchors to be installed in the road reserve to be at least 3000mm below the surface and be inclined downwards at an angle of at least 15°.

If anchors cannot be installed 3000mm below the surface level, once work has completed ground anchors are to be removed or if impossible then the anchors need to be cut down to 1500mm below the surface.

Depending on services in the street, the ground anchors may need to be cut down to a deeper level.

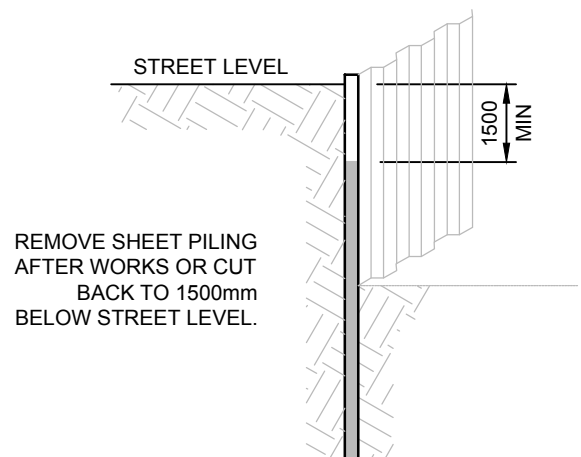


### SHEET PILING

Once works have been completed, sheet piles are to be removed or if impossible than sheet piles need to be cut down to 1500mm below the surface level of the street.

Depending on services in the street, the sheet piles may need to be cut down to a deeper level.

It is the builders responsibility to ensure that the clearances are obtained from all the service providers and authorities.



Note:

1. The Local Government Act requires the applicant to obtain permission from the local authority for any works in, over or above the street to indemnify the local authority against any damages which may arise from the works.