

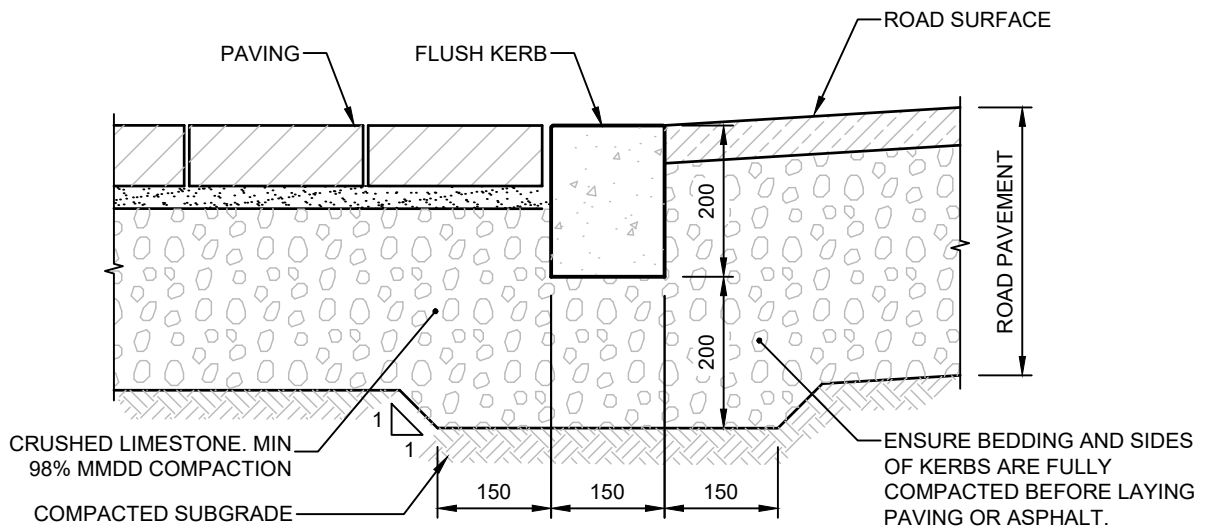
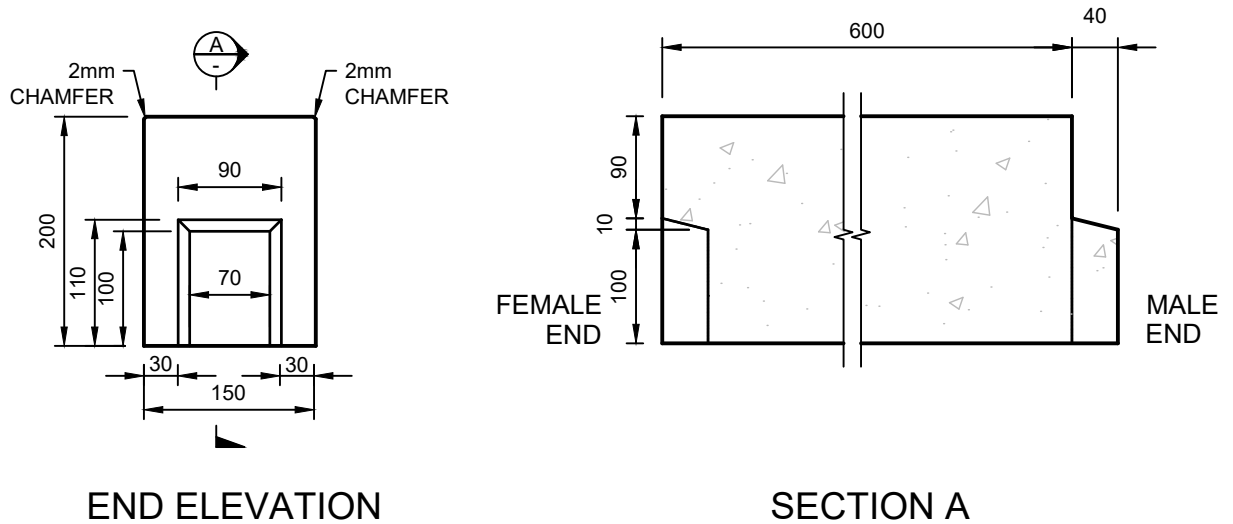
City of Perth

# Design and Construction Note

# 402.02

## Standard Kerb Types and Installation Details Precast Concrete Flush Kerb

Reviewed: 17/10/2018



### PRECAST FLUSH KERB LENGTH: 600mm

#### General Note:

1. For more information on concrete, mixing and tolerances of precast concrete kerbs refer *Design and Construction Note 402.00 - Precast Concrete Kerbs General Specification*.