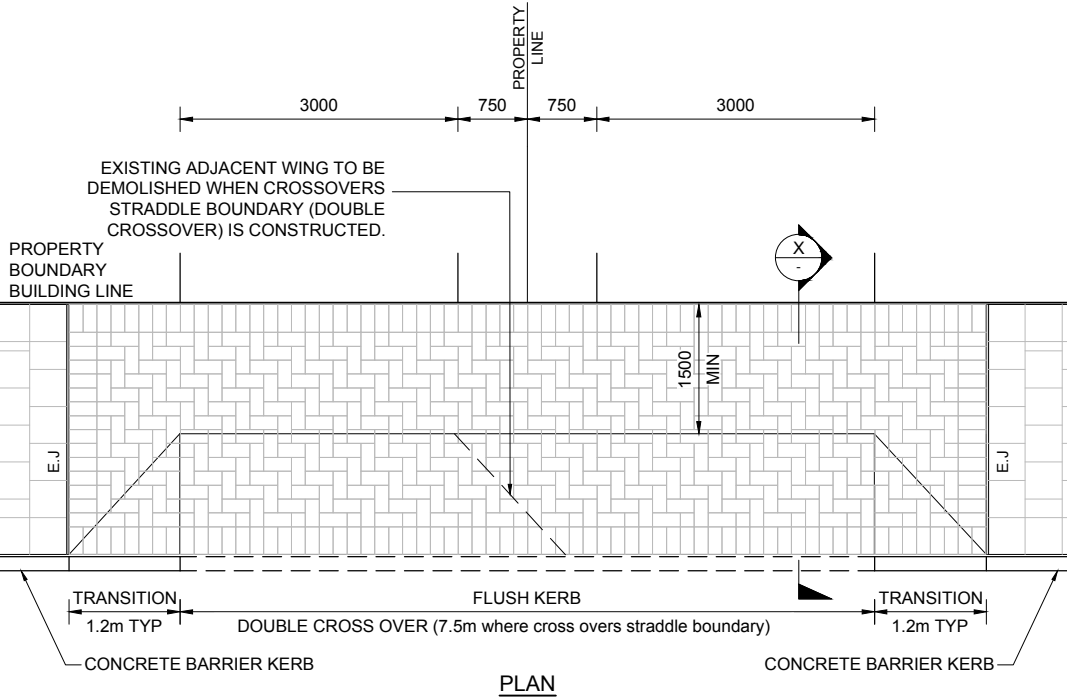


VEHICLE CROSS-OVER MERGE AT PROPERTY LINE

302.02

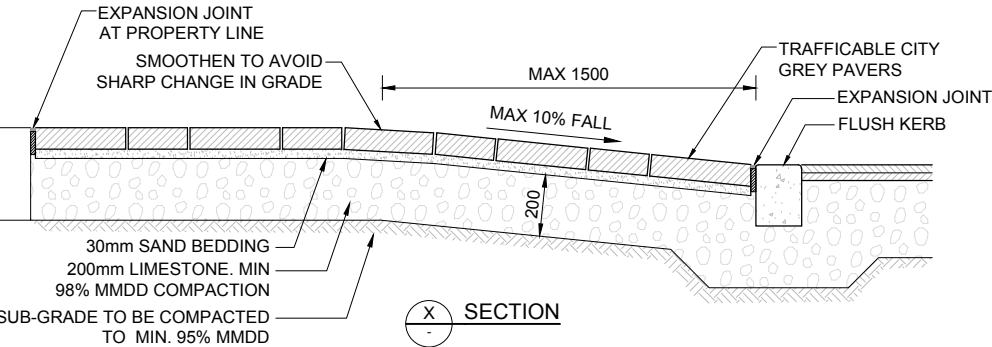
FOOTPATH AND PAVEMENT DESIGN

REVIEWED: 07.05.2024

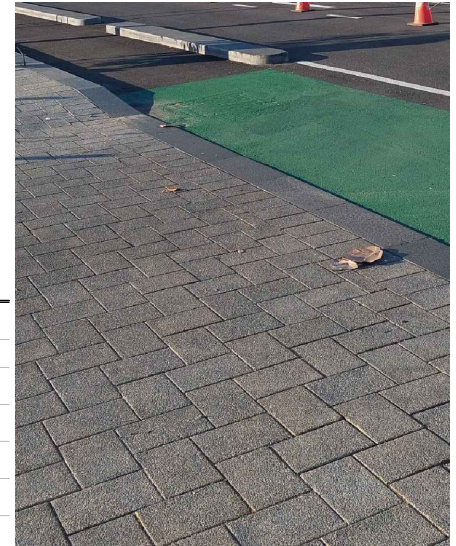


PLAN

NOTE WHERE DIMENSIONS BETWEEN TWO EXISTING DRIVEWAYS LESS THAN 2.4m PROVIDE ONE CROSS-OVER FOR BOTH.



SECTION



GENERAL NOTES

1. CITY GREY FOOTPATH PAVERS IN TRAFFICABLE AREAS ARE 300X200X70MM.
2. PAVERS ARE TO BE LAID IN HERRINGBONE PATTERN, AT A 90° ANGLE TO THE KERB.
3. ON STREET WITH CURVE, PAVING TO BE ALIGNED WITH PREDOMINANT GEOMETRY OF ROAD, ALIGNMENT TO TRANSITION AT INTERSECTION OF DRIVEWAYS.
4. LEAVE JOINTS OF 3-4MM BETWEEN THE SLABS AND FILL WITH 'PAVELOCK' SAND OR SIMILAR APPROVED.
5. ALL EXPANSION JOINTS SHALL BE 75MM X 10MM 'ABELFLEX' BUTYL MASTIC SEALANT (COLOUR: GREY) TO BE USED ON EXPANSION JOINTS OR SIMILAR APPROVED WITH 'PAVELOCK' SAND OR SIMILAR APPROVED.
6. CONCRETE PAVERS SHOULD BE A MINIMUM OF 28 DAYS OLD, PRIOR TO LAYING.
7. KERB OPTIONS:
 - GRANITE KERB
 - CONCRETE KERB