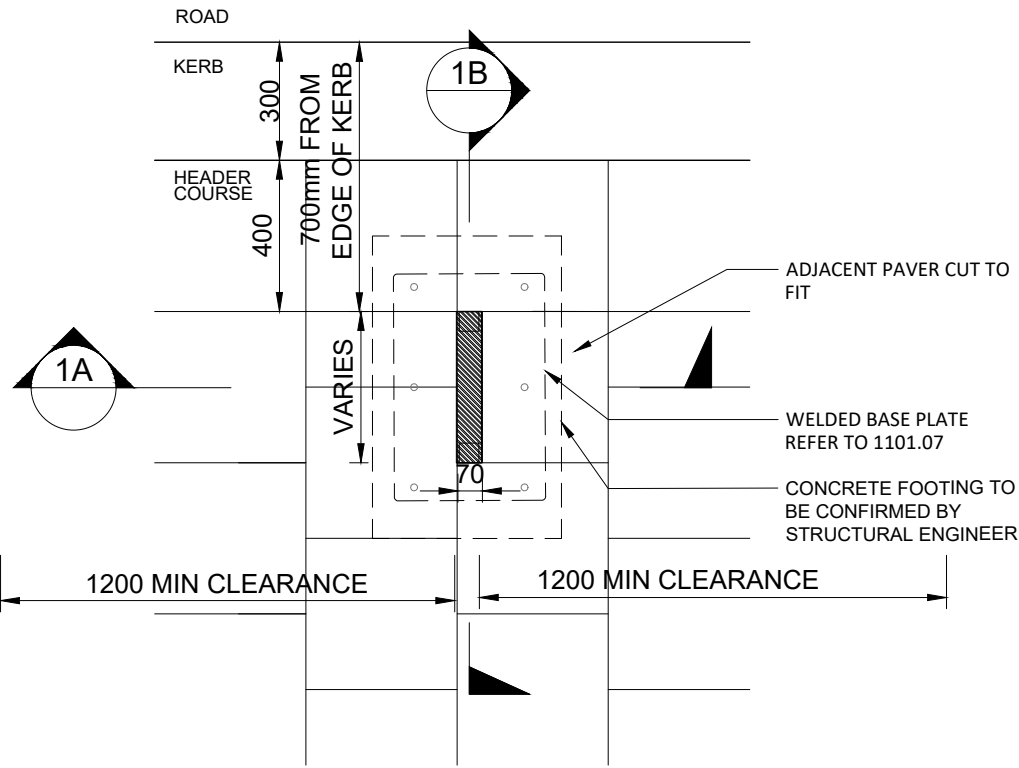


TYPICAL PLINTH IN CITY GREY PAVING

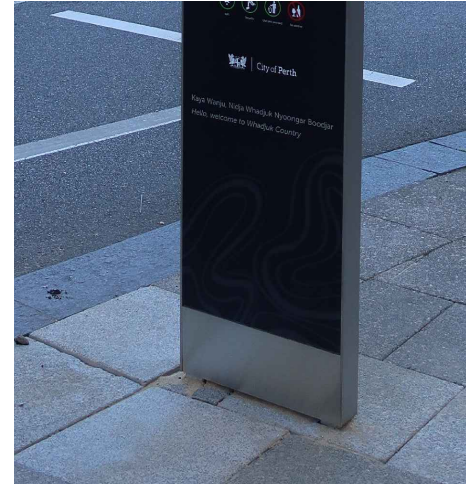
1101.08

WAYFINDING SIGNAGE DESIGN AND INSTALLATION

REVIEWED: 09.07.2024



PLAN - PLINTH ON URBANSTONE PAVING



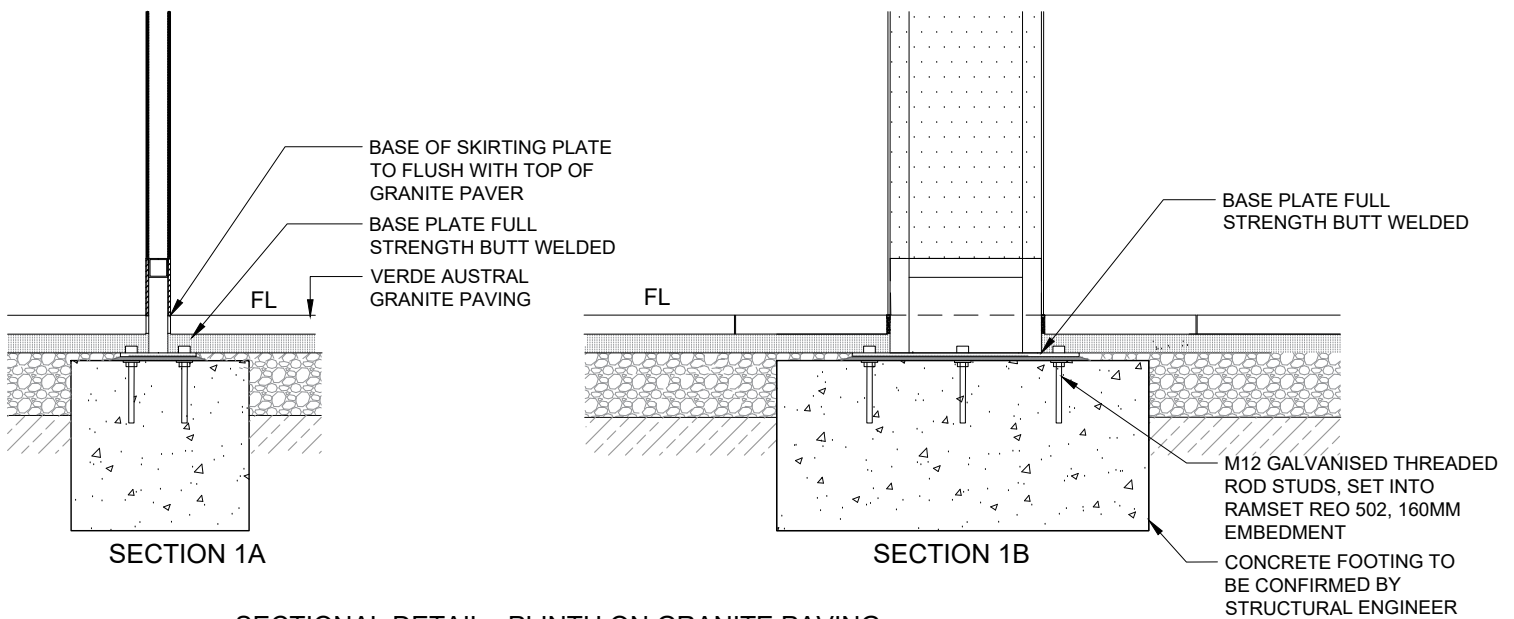
NOTES

FOOTING

ALL CONCRETE FOOTINGS AND BOLTING SYSTEMS MUST BE APPROVED AND SIGNED OFF BY AN EXPERIENCED AND NER REGISTERED STRUCTURAL ENGINEER.

PAVING

- 400X400MM CITY GREY PAVING TO BE PAVED UP TO THE PLINTH.
- ALL EXPANSION JOINTS SHALL BE 75MM x10MM 'ABELFLEX' OR SIMILAR APPROVED, BUTYL MASTIC SEALANT (COLOUR: GREY) TO BE USED ON EXPANSION JOINTS.
- REFER TO BOOK 300 FOR CITY GREY PAVING DETAILS.



SECTIONAL DETAIL - PLINTH ON GRANITE PAVING