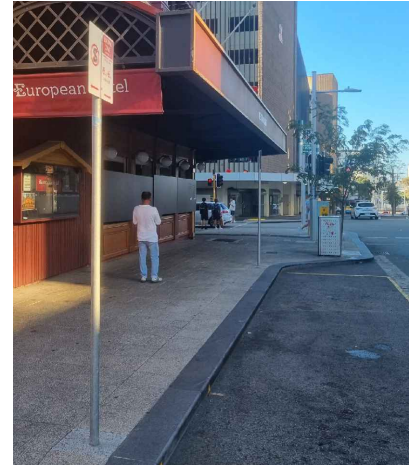
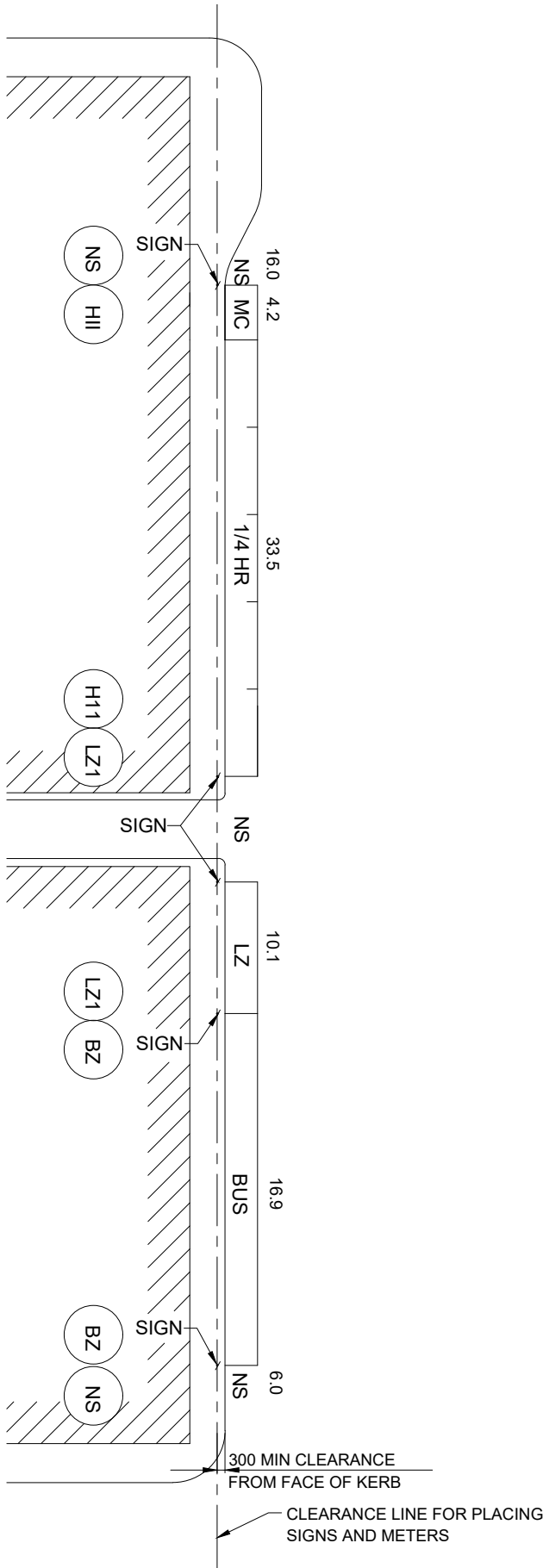


# STANDARD PARKING SIGN AND POLE

# 103.00

STREET LAYOUT AND PAVEMENT DESIGN GUIDELINES

REVIEWED: 21.03.2024



**General Notes:**

The objective of this design is to reduce the visual clutter of parking signs.

This should be achieved by:

1. Rationalising the location and types of parking to minimise the number of signs required;
2. Utilising existing sign poles to fix parking signs to;
3. Utilising existing structures to fix parking signs to, i.e. bollards, verandah posts, buildings etc;
4. Minimising size of signs.

All proposed parking designs should be developed in liaison with the City of Perth's parking department and Australian Standard as 1742.11-2016.

